

# Control Indicator R30



## ■ R30 Appearance

- Four material batching indicator:  
R30.20
- Specially for batching control



# Application



**Concrete  
batching machine**



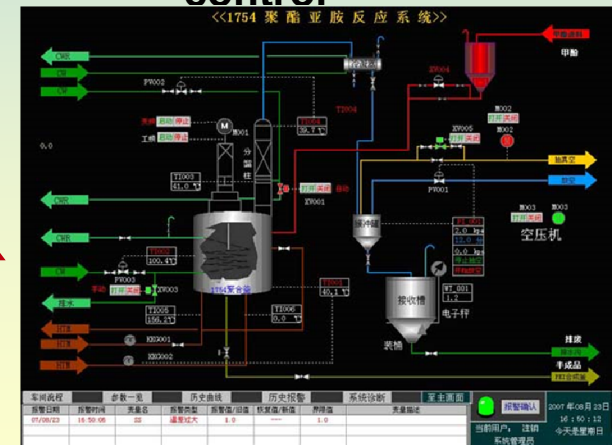
**metallurgical setting  
control**



**Feed machinery**



**Cement  
industry...etc**



**D C S control system**

HMI Easy to understand

Good environmental  
compatibility



Integrated work mode

Flexible communication  
connections

# Specifications

## ■ display:

- Main display: 6 red LED, height 10.3mm
- Vice: 6 green LED, height 7mm
- Status bar: 10 status indicator LED



# Specifications



Design and produce as Intel'  
standard

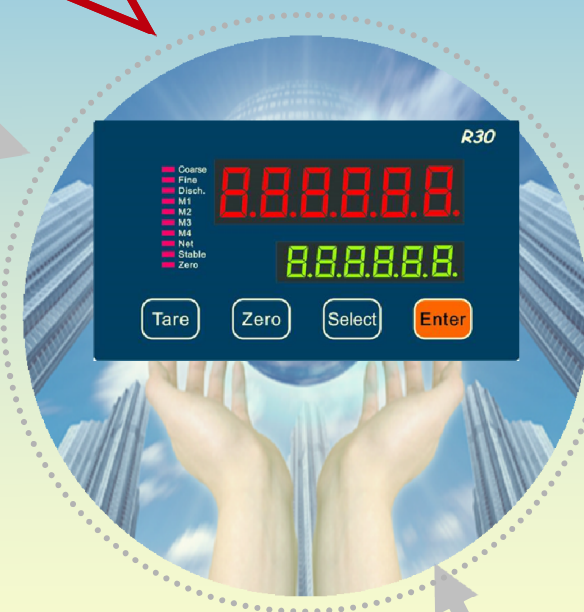
IEC61000-4-2  
Electrostatic discharge test

IEC61000-4-4  
Burst test

24VDC Low-voltage DC power supply

Operating temp: -10~40°C  
Max operating temp: -20~50°C

RFI:80~2000MHZ, 10V/m, change no more than1d



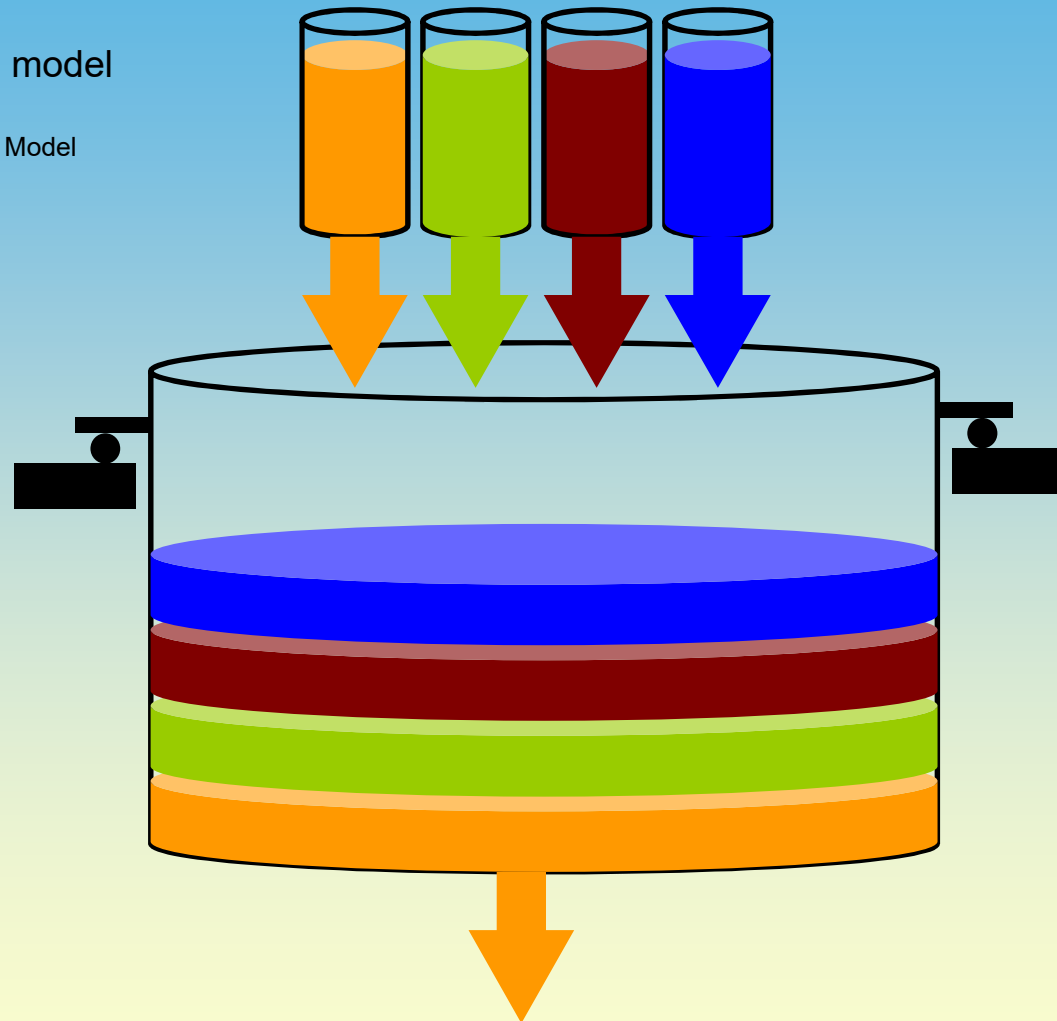
## ■ Communication

- Isolated serial port RS232
- Isolated serial port RS485
- Other connections
  - printer
  - PC
  - PLC、DCS (MODBUS RTU)
- Selected connections (under development)
  - Analog one-way: 4~20mA
  - Digital dual-way: Profibus DP

# Specifications

Build-in two control model

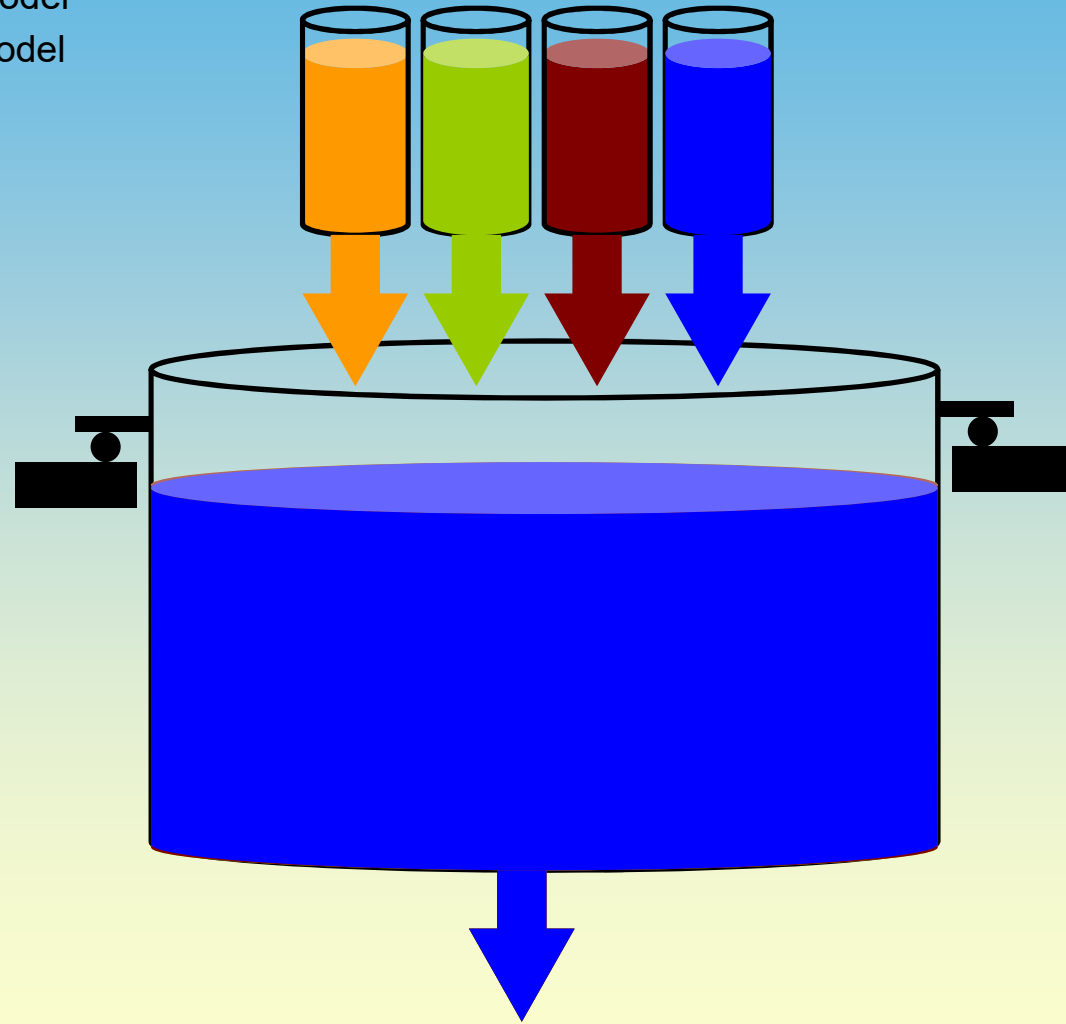
■ Mixed Model



# Specifications

Build-in two control model

■ Recycle model





## ■ General specs

- 24 high-precision low temperature drift and  $\Sigma$ - $\Delta$  converter chip。 100Hz sampling rate
- Connect 6 pcs load cells of 350Ohms
- 10 adjustable digital filter
- Input/output
  - 4 inputs
  - 12 outputs。 MOSFET type, 18~30VDC, 200mA
- Front panel meets IP 65
- Panel structure: SS304 front and rear panels.

# Model



## ■ Model descriptions

Model	EPR #	Description
R30.20	24220002	Four material batching; 4 inputs, 12 outputs; RS232/RS485 connector; DC24V power supply
R30.00	----	One material setting control; 1 input, 4 output; RS232/RS485 connector; DC24V